

# JELD-WEN® Steel

CONTOURS STEEL DOOR, WOOD EDGE  
6-8 INSWING IMPACT GLAZED SINGLE OR DOUBLE DOOR UNIT  
UTILIZING COMPONENTS FROM ODL® INC. AND  
ENDURA PRODUCTS INC.

## GENERAL NOTES

1. THIS PRODUCT IS DESIGNED TO COMPLY WITH THE CURRENT FLORIDA BUILDING CODE (FBC), INCLUDING HVHZ AND HAS BEEN EVALUATED IN ACCORDANCE WITH THE FOLLOWING:

TAS 201-94  
TAS 202-94  
TAS 203-94

- WOOD BUCKS BY OTHERS, MUST BE ANCHORED PROPERLY TO TRANSFER LOADS TO THE STRUCTURE.
- PRODUCT ANCHORS SHALL BE AS LISTED AND SPACED AS SHOWN ON DETAILS. ANCHOR EMBEDMENT TO BASE MATERIAL SHALL BE BEYOND WALL DRESSING OR STUCCO.
- DESIGNED PRESSURE RATING SEE TABLE I, PAGE 1.
- THIS PRODUCT DOES NOT MEET THE WATER REQUIREMENTS FOR HIGH VELOCITY HURRICANE ZONE (HVHZ)
- PRODUCT REQUIRES PROTECTIVE COVERING IN ACCORDANCE TO THE FBC IN HVHZ

## RESIDENTIAL INSULATED STEEL DOOR (Common to all frame conditions)

### DOOR LEAF CONSTRUCTION:

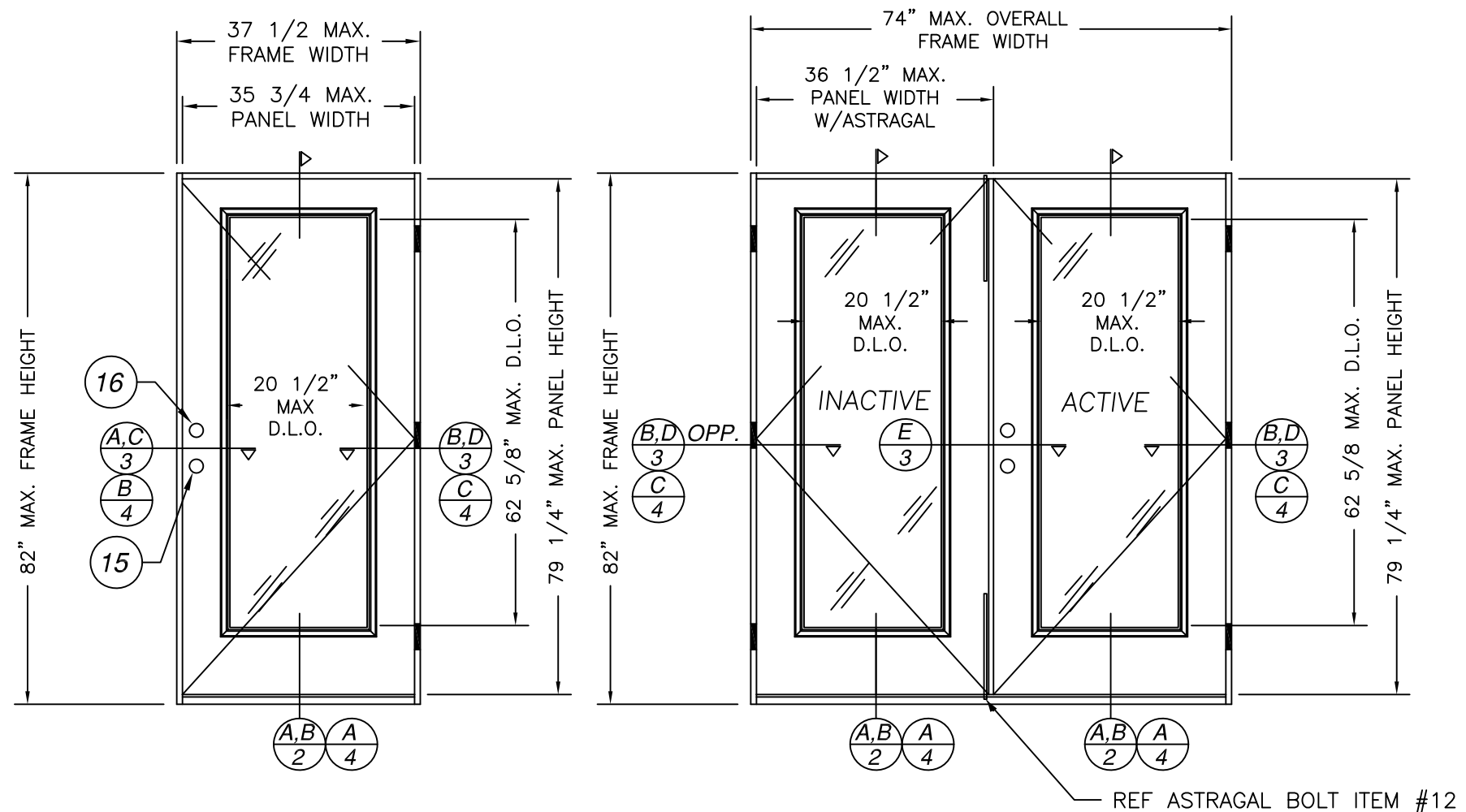
**Face sheets:** 24 GA (0.021" min) thickness. Galvanized steel A-525 commercial quality AKDQ per ASTM 620 with average minimum yield strength  $F_y(ave)=30627$  psi.

**Core Design:** Door Core by JELD-WEN.

**Panel Construction:** The active and inactive panels are constructed from 24 GA (0.021" min) galvanized steel. The face sheets at top and bottom are bent 90° over the top and bottom rails. The top rail measures 1.0" high x 1.688" wide. The steel bottom rail measures 1.21" high x 1.688" wide. The sides of the face sheets are roll formed into the latch and hinge stiles which measure 1.00" high x 1.688" wide. The interior cavity is filled with door core. The face sheets are glued to the door core. The panels are cut out for the two-piece ODL Aluminum ALLEN frame. Units are glazed with tempered and laminated impact 1" IG. On double door applications the inactive door is fitted with an extruded aluminum astragal of 6063-T5 alloy.

**Frame Construction:** The frames are constructed of fingerjointed pine jambs measuring 4-9/16" x 1-1/4". The head jambs are mortised and butt joined to the side jambs, and attached with three (3) 16GA 7/16" crown x 2" long staples on each side. The threshold is attached to the side jambs with three (3) 16GA 7/16" crown x 2" long staples on each side.

**Glazing:** ODL insulated lite is 1" overall thickness, consisting of one (1) pane of 0.125" tempered glass; 0.5" air space; two (2) panes of 0.125" annealed with .090" PVB interlayer by Solutia. All lites are sandwiched glazed into the panels.



**SINGLE INSWING UNIT (X)**  
SCALE: 1/2" = 1'-0"

**DOUBLE INSWING UNIT (XX)**  
SCALE: 1/2" = 1'-0"

ALL DOOR MODELS ARE VIEWED  
FROM THE INTERIOR SIDE

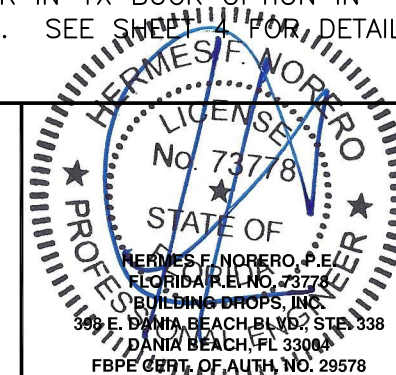
TABLE I DESIGN PRESSURE RATING		
	WHERE WATER INFILTRATION REQUIREMENT IS NEEDED.	WHERE WATER INFILTRATION REQUIREMENT IS NOT NEEDED OR PROTECTED BY OVERHANG. *
POSITIVE	NOT APPROVED	+60.0 PSF
NEGATIVE	NOT APPROVED	-65.0 PSF

\* Unit shall be installed at location protected by overhang such that overhang ratio (OH) = OH length/OH height greater than 1.0

TABLE OF CONTENTS	
SHEET #	DESCRIPTION
1	TYPICAL ELEVATIONS
2	VERTICAL CROSS SECTION & BILL OF MATERIAL
3	HORIZONTAL CROSS SECTIONS
4	OPTIONAL 1X BUCK IN MASONRY/CONCRETE CROSS SECTIONS
5	ANCHORING LOCATIONS
6	COMPONENT DETAILS
7	UNIT COMPONENTS

### NOTES:

- ALL VIEWS FROM INTERIOR.
- FOR HORIZONTAL ANCHOR IN 1X BUCK OPTION IN MASONRY/CONCRETE. SEE SHEET 4 FOR DETAILS.
- FOR VERTICAL ANCHOR IN 1X BUCK OPTION IN MASONRY/CONCRETE. SEE SHEET 4 FOR DETAILS.

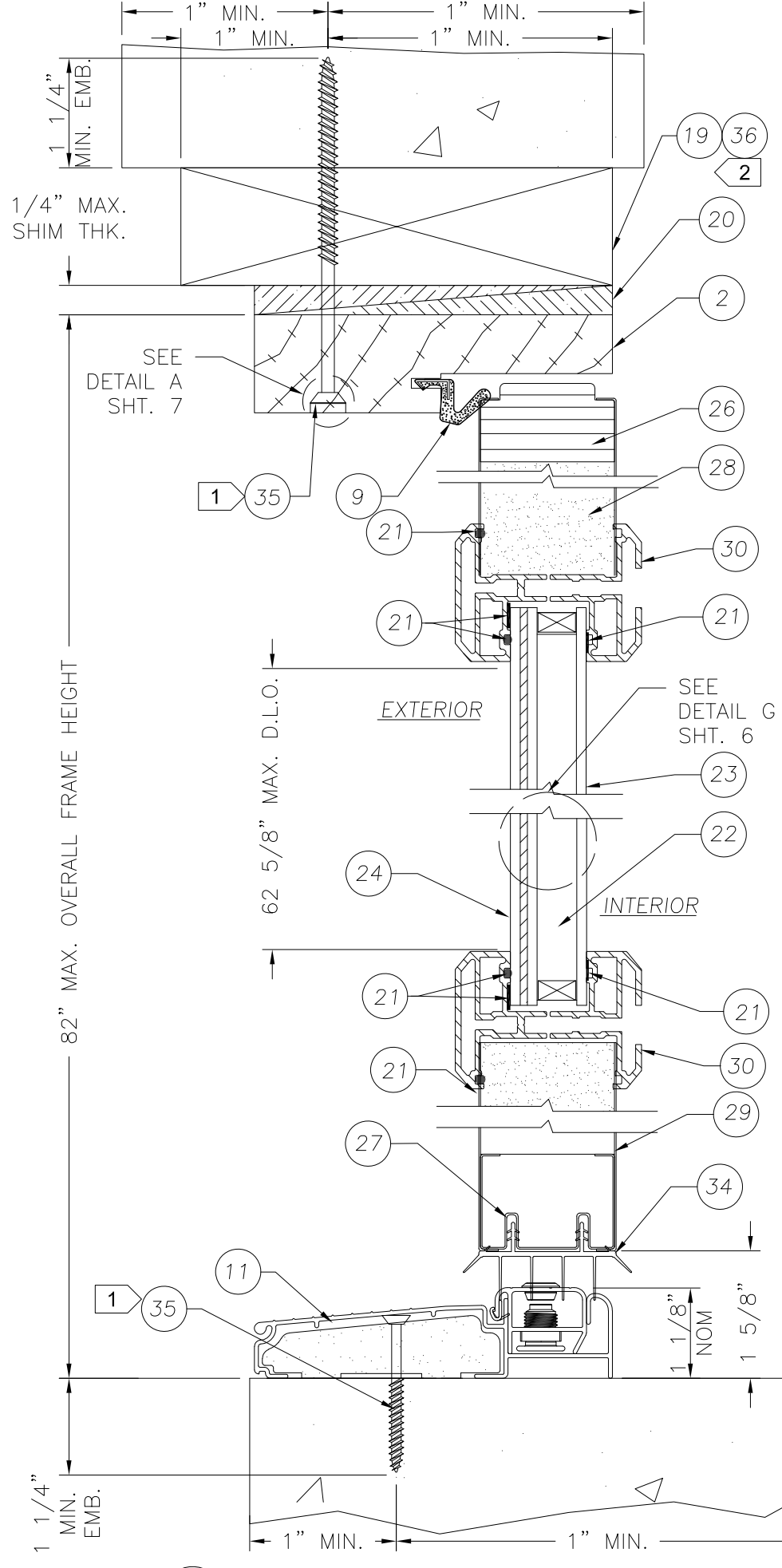
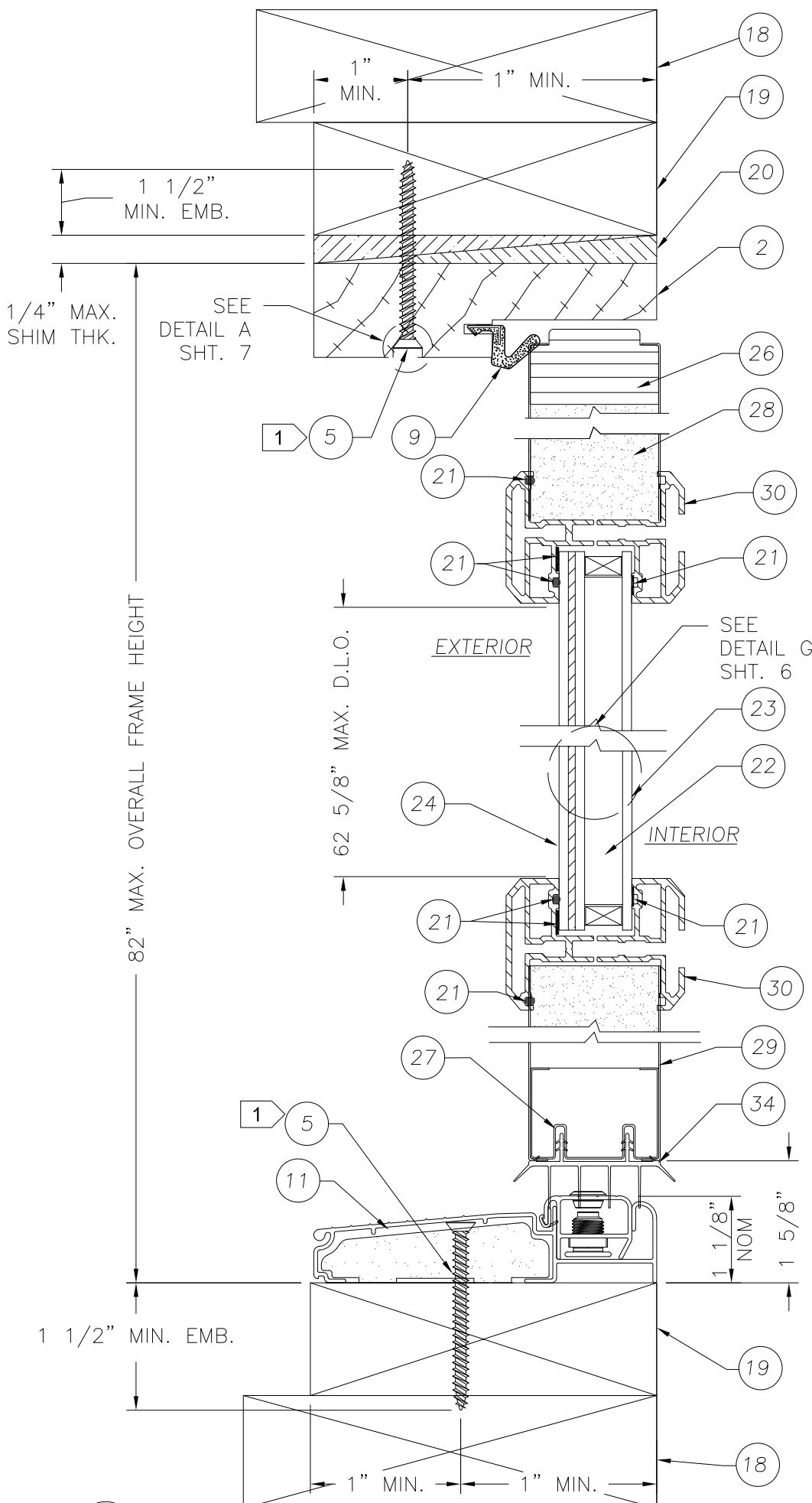


PRODUCT:  
CONTOURS STEEL DOOR, WOOD EDGE  
6-8 INSWING IMPACT GLAZED  
SINGLE OR DOUBLE DOOR UNIT  
PART OR ASSEMBLY:  
TYPICAL ELEVATIONS &  
GENERAL NOTES

NO.	DATE	REVISIONS
G 01/21/20		ADD ADA THRESHOLD
F 8/28/17		CHG CORE DEFIN.
E 1/20/15		5TH EDITION FBC SM
D 11/17/10		GENERAL REVISION GL
C 2/5/08		ADD CONC. DWG. EAG
B 4/8/06		GENERAL REVISION DREW
A		BY

DATE: 2/5/08  
SCALE: AS NOTED  
DWG. BY: EAG  
CHK. BY: S. SAFFELL  
DRAWING NO.: JW0509-04  
SHEET 1 OF 7

**JELD-WEN®**  
WINDOWS & DOORS  
3737 Lakeport Blvd.  
Klamath Falls, Oregon 97601  
Ph. (541) 882-3451  
Fax (541) 850-2609



Item	DESCRIPTION	Material
1	SIDE JAMB (1 1/4"x 4 9/16" FINGERJOINTED PINE)	PINE
2	HEAD JAMB (1 1/4"x 4 9/16" FINGERJOINTED PINE)	PINE
3	4" x 4" BUTT HINGE 12GA. (.089" MIN)	STEEL
4	#9 x 1" PHILLIPS FLATHEAD WOOD SCREW	STEEL
5	#10 PHF SCREW WITH 1 1/2" MIN. EMBED.	STEEL
6	#10 X 2" PHILLIPS FLATHEAD WOOD SCREW	STEEL
7	#8 X 3" PHILLIPS FLATEHEAD WOOD SCREW	STEEL
8	#8X1" PHILLIPS FLAT HEAD WOOD SCREW	STEEL
9	COMPRESSION WEATHERSTRIP (Q-LON QDS-650)	VINYL
11	INSWING ADJUSTABLE THRESHOLD	ALUMINUM
12	ASTRAGAL THROW BOLT, STEEL ROD, 5/16 x 18"	STEEL
13	ASTRAGAL BOLT STRIKE PLATE LOCATED ON HEAD JAMB	STEEL
14	16 Ga. 7/16" CROWN x 2" LONG STAPLES	STEEL
15	LOCK SERIES 400	STEEL
16	DEADBOLT SERIES 780	STEEL
17	HURRICANE ASTRAGAL	ALUMINUM
18	2x WOOD BUCK	WOOD
19	2x WOOD BUCK	WOOD
20	NON COMPRESSION SHIM	WOOD
21	DOW 995 SILICONE SEALANT	SILICONE
22	1" IMPACT IG ASSEMBLY BY ODL	GLASS
23	1/8" TEMPERED GLASS	GLASS
24	3/8" LAMINATED ANNEALED GLASS	GLASS
25	LOCK BLOCK	WOOD
26	TOP RAIL (FINGER JOINTED LVL)	LVL
27	BOTTOM RAIL (25GA MIN GALVANIZED STEEL)	STEEL
28	DOOR CORE BY JELD-WEN	FOAM
29	STEEL DOOR PANEL SKIN MATERIAL (24GA GALVANIZED A-525 COMMERCIAL QUALITY 0.021" MIN. THICK.)	GALVANIZED
30	ODL FLAT LITE KIT	ALUMINUM
31	HINGE SIDE STILE (FINGER JOINTED LVL)	LVL
32	LATCH SIDE STILE (FINGER JOINTED LVL)	LVL
33	#8 x 2" PHILLIPS FLATHEAD WOOD SCREW	STEEL
34	BOTTOM SWEEP	VINYL
35	3/16" ITW BUILDTEX TAPCON WITH 1.25" MIN. EMBEDMENT	STEEL
36	OPTIONAL 1x WOOD BUCK	WOOD
37	ODL FLAT FRAME LITE KIT OPTION	POLYPROP-
38	FLUSH BOLT	STEEL
39	ADA THRESHOLD	ALUMINUM
40	ODL FOAM IN PLACE GASKET	FOAM

NOTES:

1 FOR TAPCON MASONRY AND WOOD SCREW ANCHOR SPACING (ITEMS #5 & #34), SEE SHEET 5. MASONRY AND CONCRETE INSTALLATION DETAILS.

2 FOR VERTICAL ANCHOR IN 1X BUCK OPTION IN MASONRY/CONCRETE. SEE SHEET 4 FOR DETAILS.

3 OPTIONALLY, ANCHOR CAN BE PLACED IN NARROW SECTION OF HEAD OR JAMB AS LONG AS MINIMUM EMBEDMENT IS ACHIEVED.

3 A VERTICAL CROSS SECTION TYP. SCALE: 6" = 1'-0"

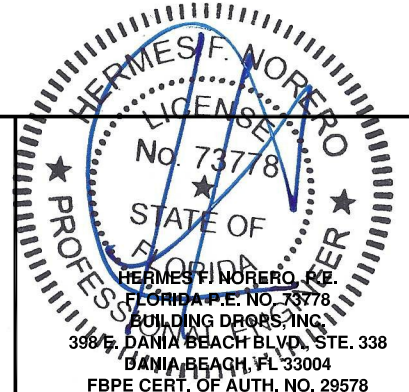
3 B VERTICAL CROSS SECTION TYP. SCALE: 6" = 1'-0"

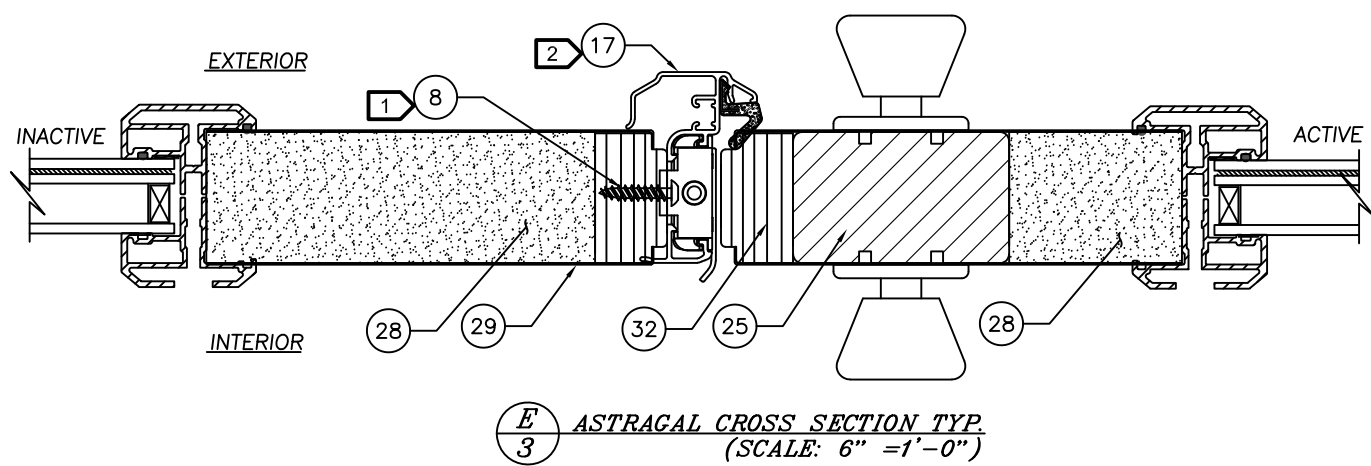
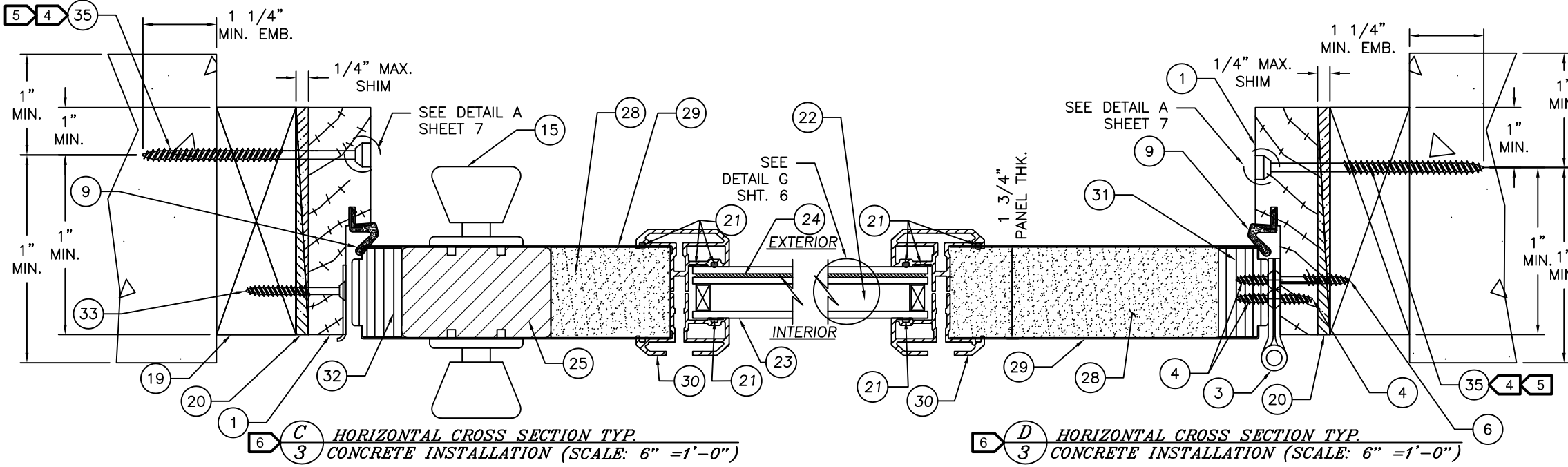
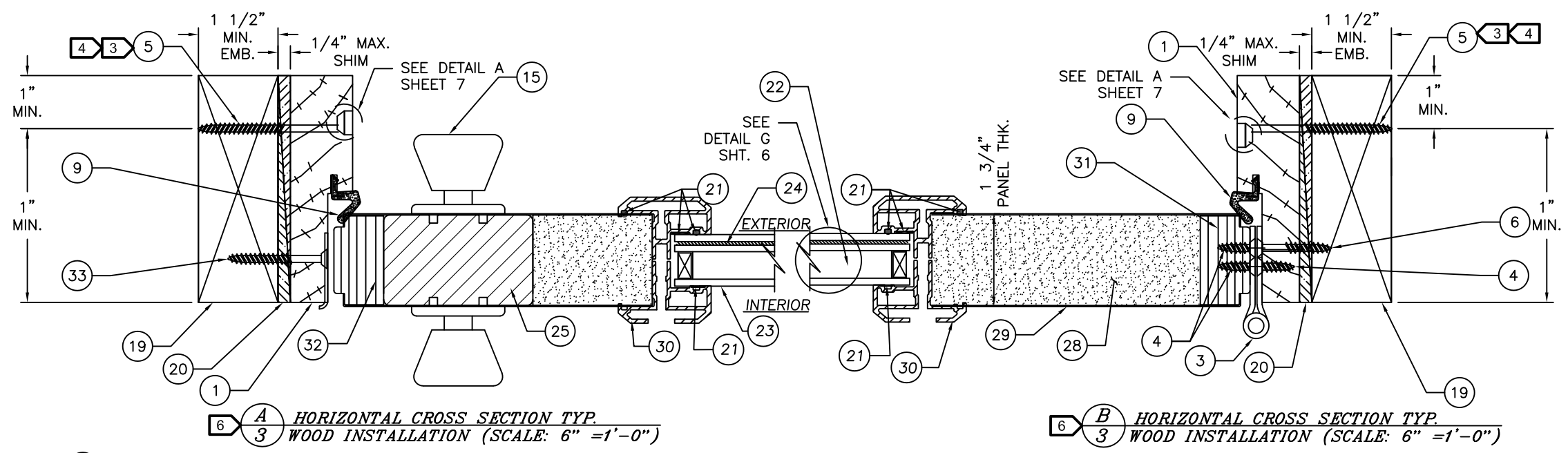
**JELD-WEN**  
WINDOWS & DOORS  
3737 Lakeport Blvd.  
Klamath Falls, Oregon 97601  
Ph. (541) 882-3451  
Fax (541) 850-2609

PRODUCT:  
CONTOURS STEEL DOOR, WOOD EDGE  
6-8 INSWING IMPACT GLAZED  
SINGLE OR DOUBLE DOOR UNIT  
PART OR ASSEMBLY:  
VERTICAL CROSS SECTIONS  
BILL OF MATERIAL

NO.	DATE	BY	REVISIONS
G	01/21/20	ADD ADA THRHOLD	TB
F	8/28/17	CHG CORE DEFIN.	JH
E	1/20/15	5TH EDITION FBC	SM
D	11/17/10	GENERAL REVISION	GL
C	2/5/08	ADD CONC. DWG.	EAG
B	4/8/06	GENERAL REVISION	DREW

DATE: 2/5/08  
SCALE: AS NOTED  
DWG. BY: EAG  
CHK. BY: S. SAFFELL  
DRAWING NO.: JW0509-04  
SHEET 2 OF 7





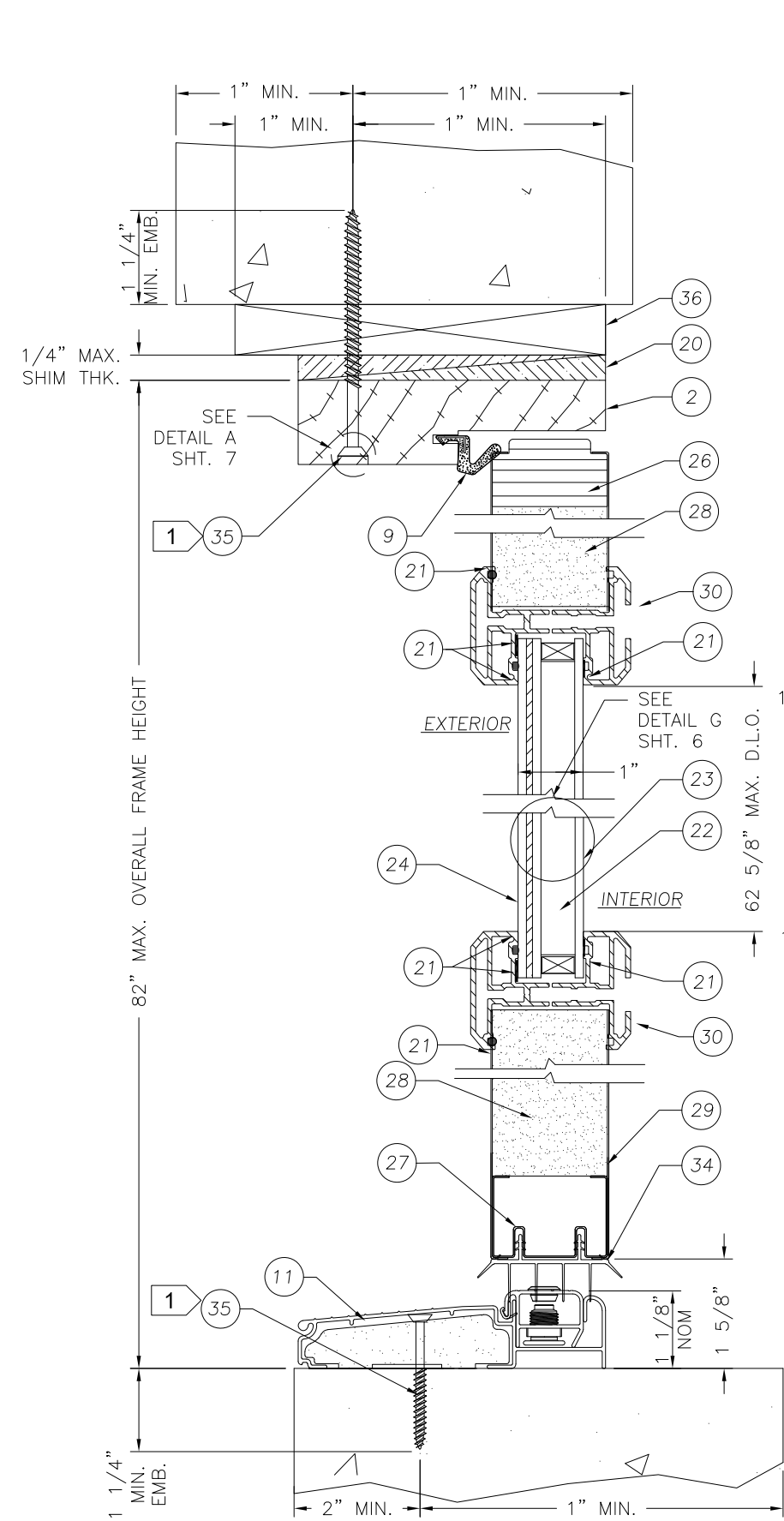
- NOTES:
- 1 ASTAGAL FASTENER SPACING DETAIL F, SHEET 6. (TOTAL OF 14 SCREWS).
  - 2 LATCH AND DEADBOLT STRIKE PLATES MOUNT TO ASTRAGAL WITH ADJUSTABLE NUT PLATES. BOTH PLATES REQUIRE #8 X 3" PHILLIPS FLAT HEAD WOOD SCREWS.
  - 3 2x BUCK TO SUBSTRATE FASTENING MAY UTILIZE OPTIONAL 3/16" ITW BUILDDEX TAPCON.
  - 4 FOR TAPCON MASONRY AND WOOD SCREW ANCHOR SPACING (ITEMS #5 & #34), SEE SHEET 5.
  - 5 FOR HORIZONTAL ANCHOR IN 1X BUCK OPTION IN MASONRY/CONCRETE, SEE SHEET 4 FOR DETAILS.
  - 6 OPTIONALLY, ANCHOR CAN BE PLACED IN NARROW SECTION OF HEAD OR JAMB AS LONG AS MINIMUM EMBEDMENT IS ACHIEVED.

PRODUCT:  
 CONTOURS STEEL DOOR, WOOD EDGE  
 6-8 INSWING IMPACT GLAZED  
 SINGLE OR DOUBLE DOOR UNIT  
 PART OR ASSEMBLY:  
 HORIZONTAL CROSS SECTIONS

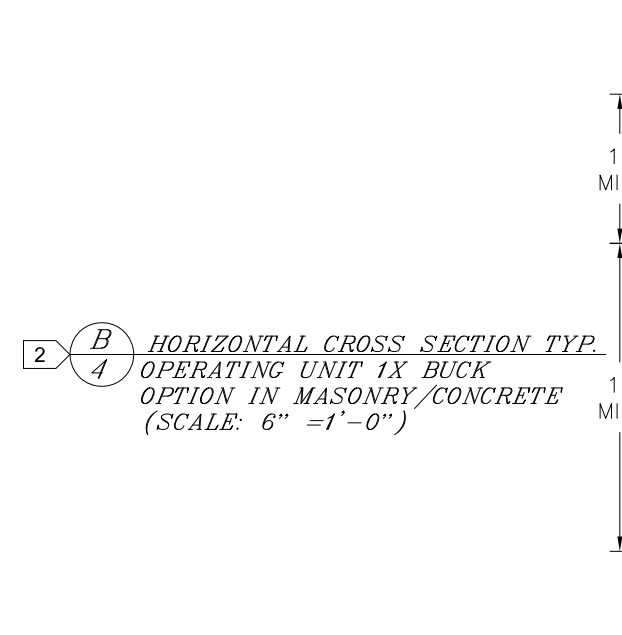
NO.	DATE	GENERAL REVISION	DRAWN	BY
G	01/21/20	ADD ADA THRESHOLD	TB	
F	8/28/17	CHG CORE DEFIN.	JH	
E	1/20/15	5TH EDITION FBC	SM	
D	11/17/10	GENERAL REVISION	GL	
C	2/5/08	ADD CONC. DWG. EAG	EAG	
B	4/8/06	GENERAL REVISION	DREW	

DATE: 2/5/08  
 SCALE: AS NOTED  
 DWG. BY: EAG  
 CHK. BY: S. SAFFELL  
 DRAWING NO.: JW0509-04  
 SHEET 3 OF 7

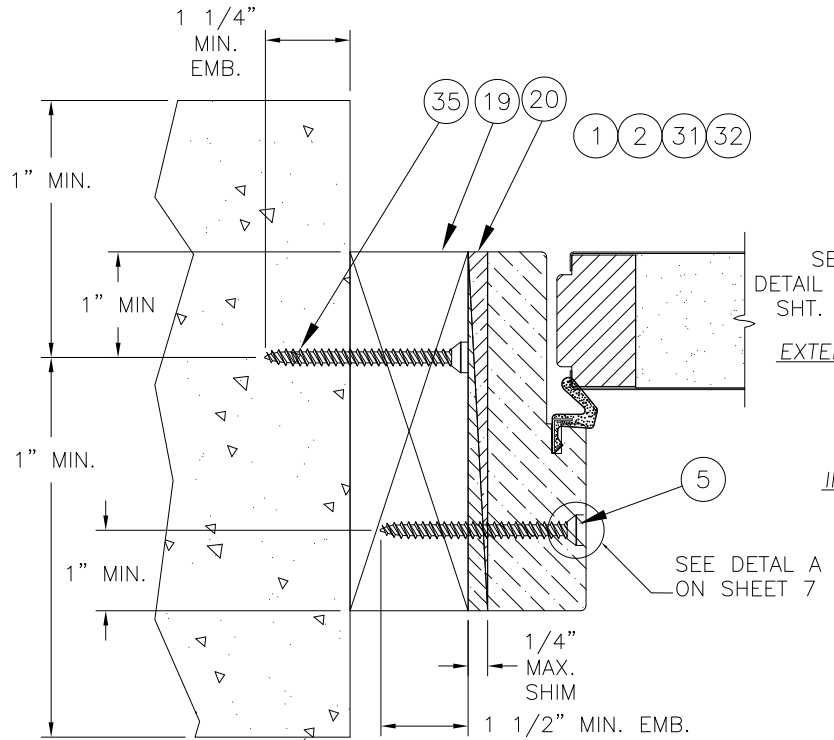




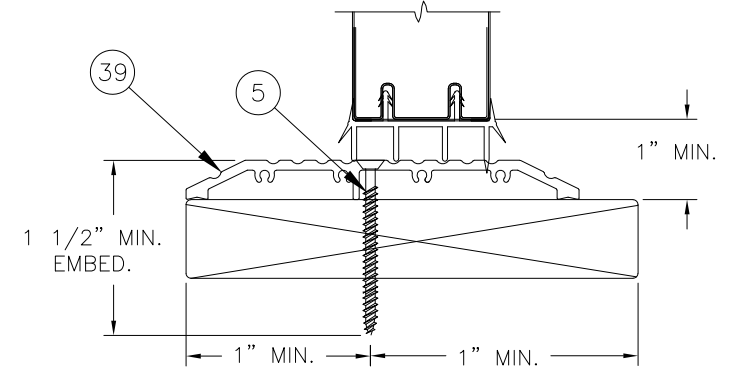
**2** **A** **4** VERTICAL CROSS SECTION TYP.  
 OPERATING UNIT 1X BUCK  
 OPTION IN MASONRY/CONCRETE  
 (SCALE: 6" = 1'-0")



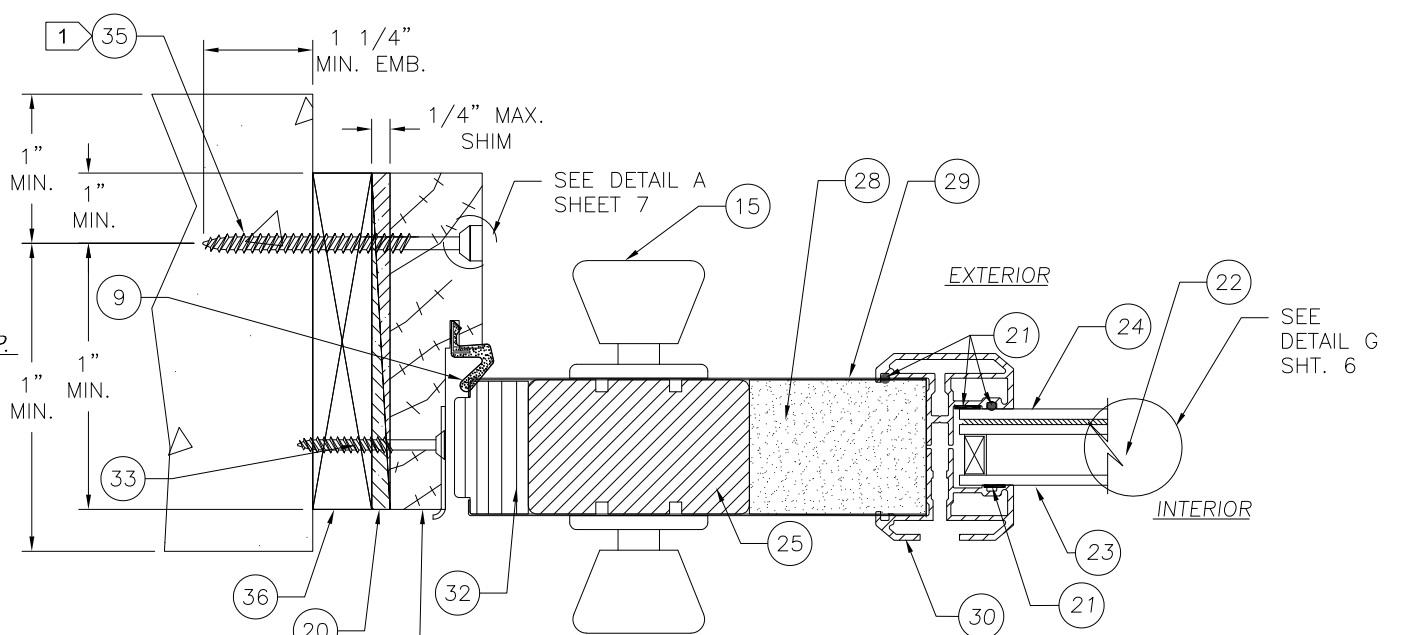
**2** **B** **4** HORIZONTAL CROSS SECTION TYP.  
 OPERATING UNIT 1X BUCK  
 OPTION IN MASONRY/CONCRETE  
 (SCALE: 6" = 1'-0")



**2** **B** **4** CROSS SECTION OF HEAD OR JAMB  
 OPERATING UNIT 1X BUCK  
 OPTION IN MASONRY/CONCRETE  
 (SCALE: 6" = 1'-0")



**2** **A** **4** VERTICAL CROSS SECTION (SILL)  
 OPERATING UNIT 1X BUCK  
 OPTIONAL ADA SILL  
 (SCALE: 6" = 1'-0")



**2** **C** **4** HORIZONTAL CROSS SECTION TYP.  
 OPERATING UNIT 1X BUCK  
 OPTION IN MASONRY/CONCRETE  
 RIGHT HINGE SHOWN, LEFT HINGE OPPOSITE SHOWN  
 (SCALE: 6" = 1'-0")

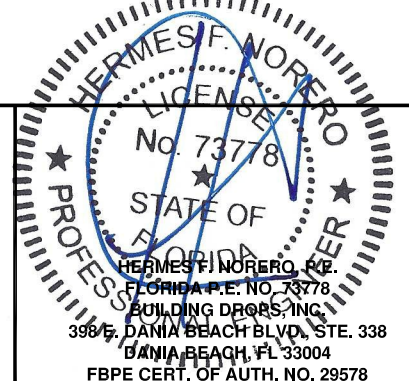
- NOTES:
- 1** FOR TAPCON MASONRY AND WOOD SCREW ANCHOR SPACING (ITEMS #5 & #34), SEE SHEET 5.
  - 2** OPTIONALLY, ANCHOR CAN BE PLACED IN NARROW SECTION OF HEAD OR JAMB AS LONG AS MINIMUM EMBEDMENT IS ACHIEVED.

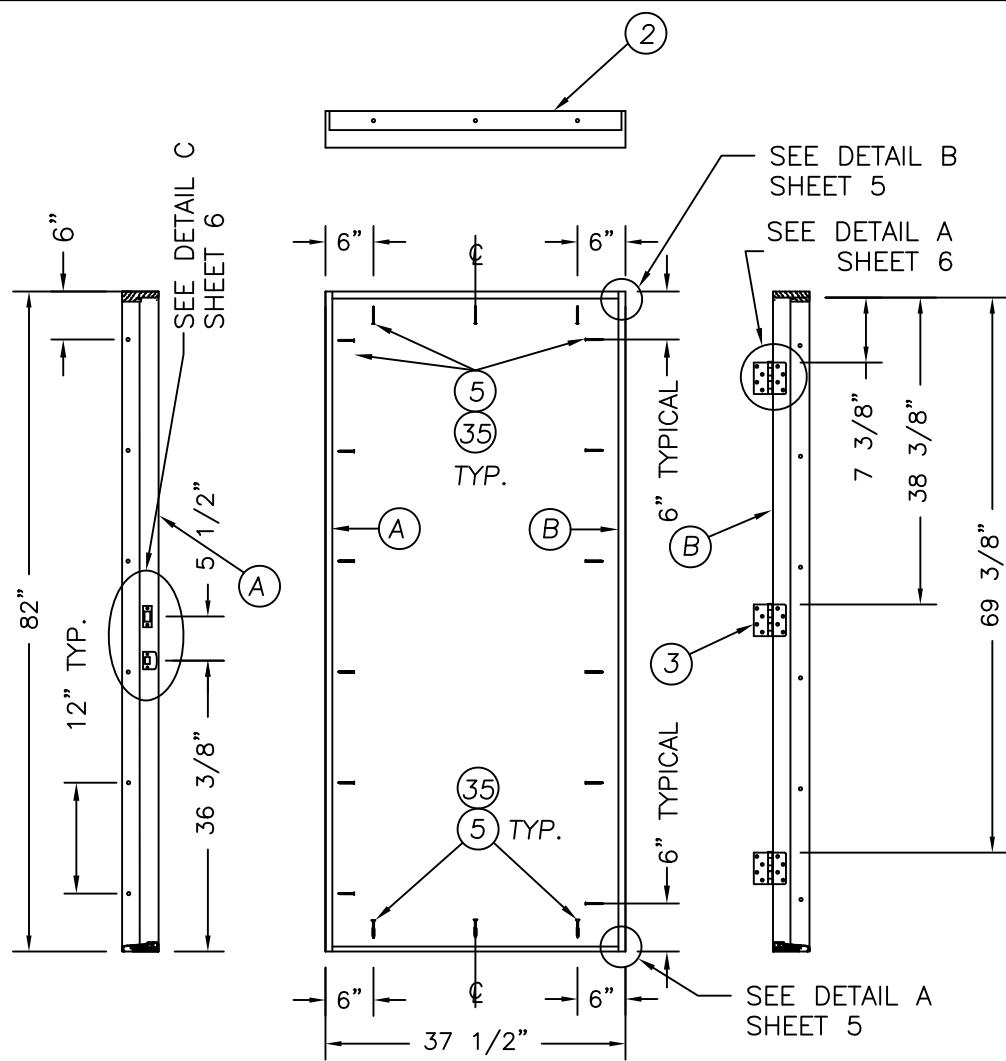
**JELDOWEN**  
 WINDOWS & DOORS  
 3737 Lakeport Blvd.  
 Klamath Falls, Oregon 97601  
 Ph. (541) 882-3451  
 Fax (541) 850-2609

PRODUCT:  
 CONTOURS STEEL DOOR, WOOD EDGE  
 6-8 INSWING IMPACT GLAZED  
 SINGLE OR DOUBLE DOOR UNIT  
 PART OR ASSEMBLY:  
 1X BUCK & OPTIONAL INSTALL IN  
 CONCRETE/MASONRY CROSS SECTIONS

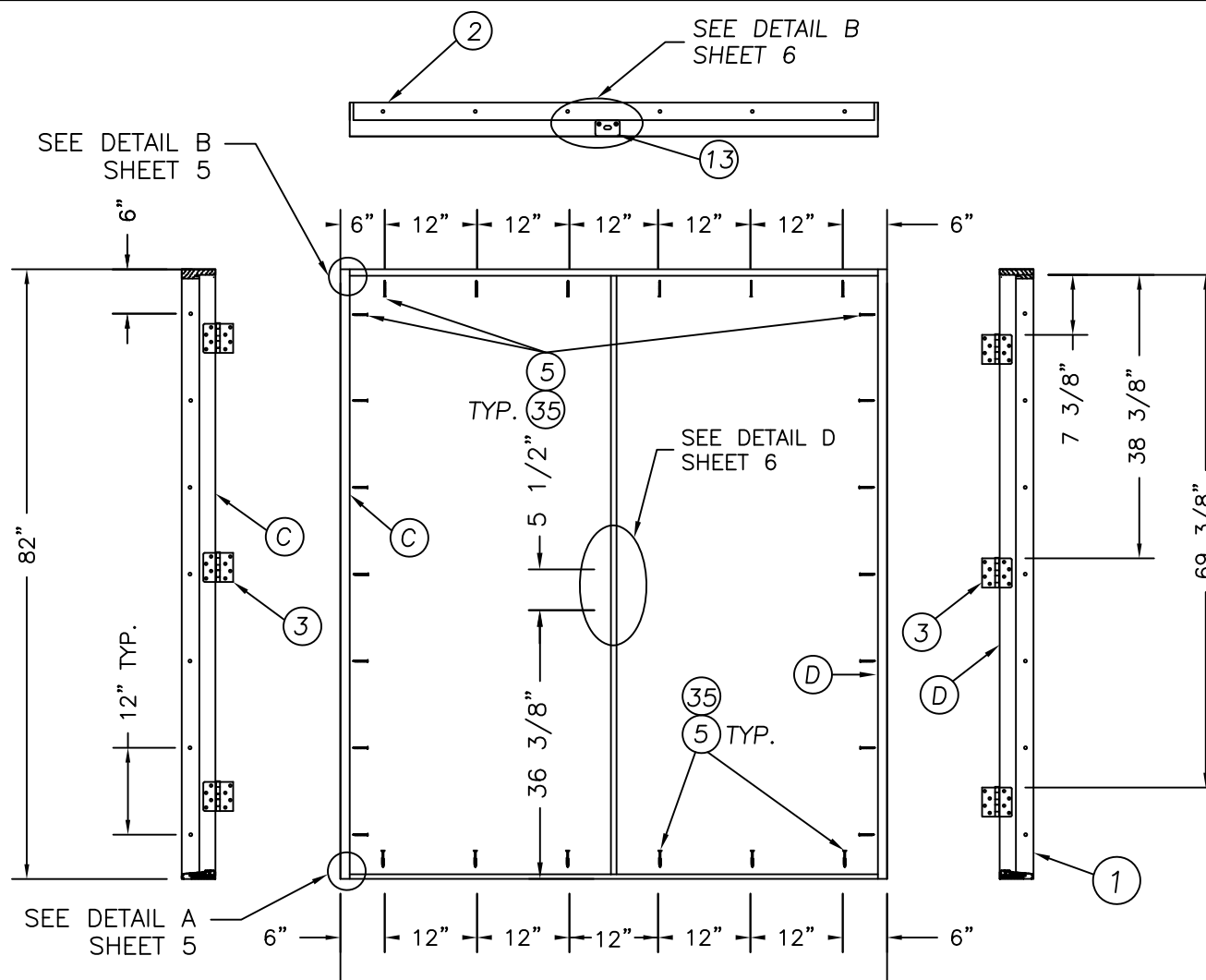
NO.	DATE	BY	REVISIONS
G	01/21/20	TB	ADD ADA THRESHOLD
F	8/28/17	JH	CHG CORE DEFIN.
E	1/20/15	SM	5TH EDITION FBC
D	11/17/10	GL	GENERAL REVISION
C	2/5/08	EAG	ADD CONC. DWG.
B	4/8/06	DREW	GENERAL REVISION

DATE: 2/5/08  
 SCALE: AS NOTED  
 DWG. BY: EAG  
 CHK. BY: S. SAFFELL  
 DRAWING NO.: JW0509-04  
 SHEET 4 OF 7

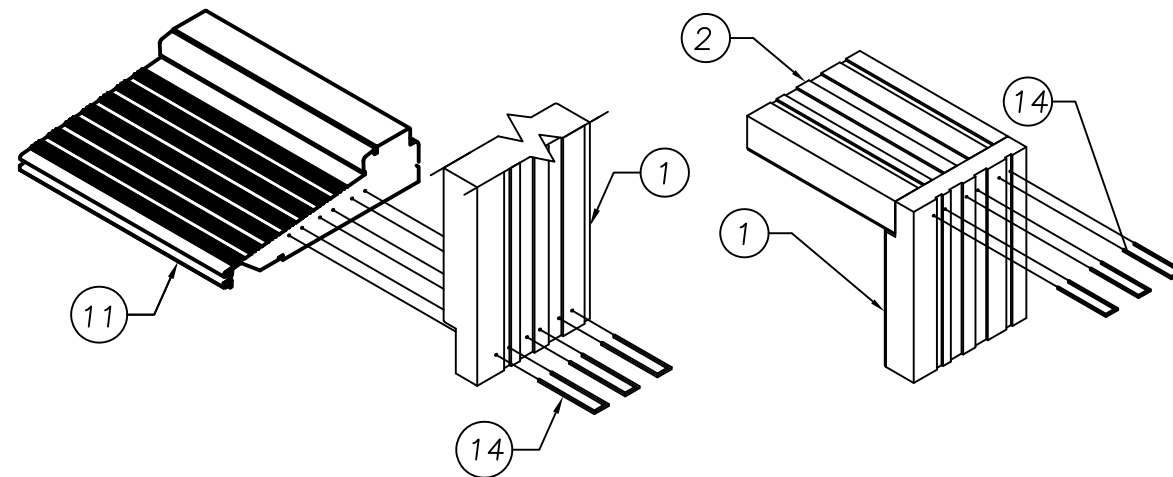




**ANCHORING LOCATIONS  
INSWING SINGLE UNIT (X)**  
SCALE: 1/2" = 1'-0"



**ANCHORING LOCATIONS DOUBLE  
INSWING UNIT (XX)**  
SCALE: 1/2" = 1'-0"



**DETAIL A**  
SCALE: 3" = 1'-0"

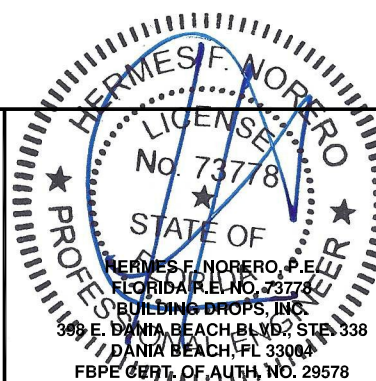
**DETAIL B**  
SCALE: 3" = 1'-0"

ALL DOOR MODELS ARE VIEWED  
FROM THE EXTERIOR SIDE

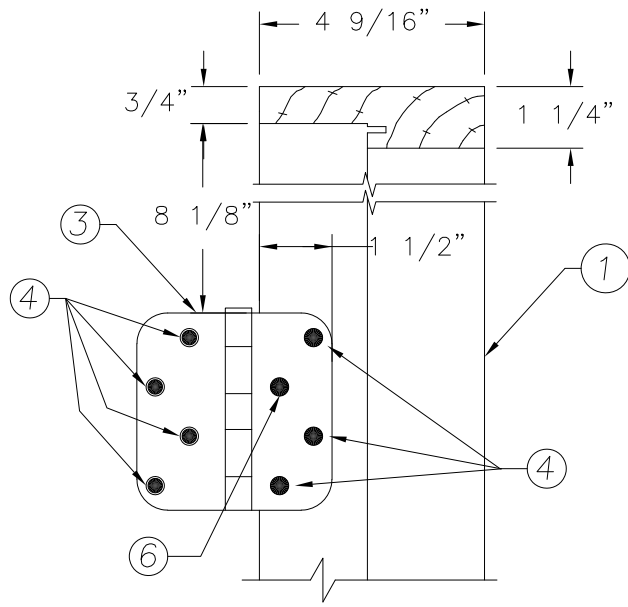
**JELBOWEN**  
WINDOWS & DOORS  
3737 Lakeport Blvd.  
Klamath Falls, Oregon 97601  
Ph. (541) 882-3451  
Fax (541) 850-2609

PRODUCT:  
CONTOURS STEEL DOOR, WOOD EDGE  
6-8 INSWING IMPACT GLAZED  
SINGLE OR DOUBLE DOOR UNIT  
PART OR ASSEMBLY:  
ANCHORING LOCATIONS  
& DETAILS

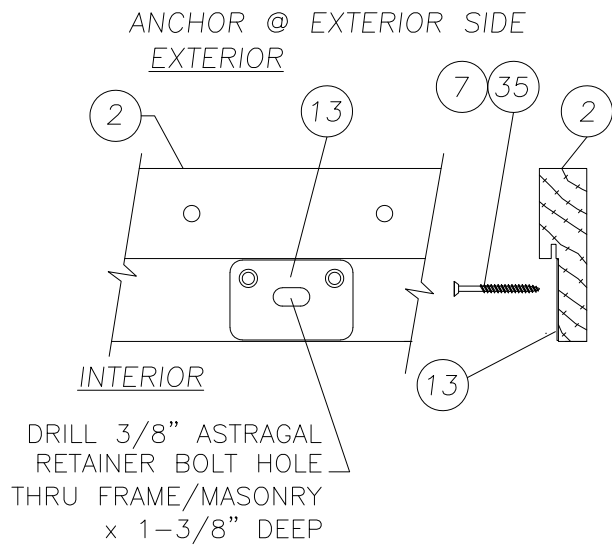
NO.	DATE	REVISIONS
G 01/21/20		ADD ADA THRESHOLD TB
F 8/28/17		CHG CORE DEFIN. JH
E 1/20/15		5TH EDITION FBC SM
D 11/17/10		GENERAL REVISION GL
C 2/5/08		ADD CONC. DWG. EAG
B 4/8/06		GENERAL REVISION DREW



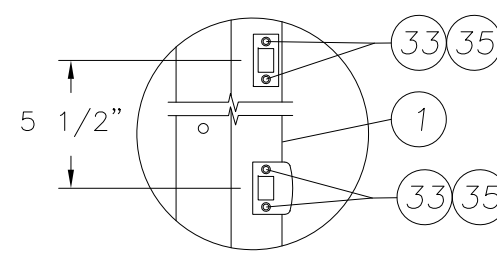
DATE: 2/5/08  
SCALE: AS NOTED  
DWG. BY: EAG  
CHK. BY: S. SAFFELL  
DRAWING NO.: JW0509-04  
SHEET 5 OF 7



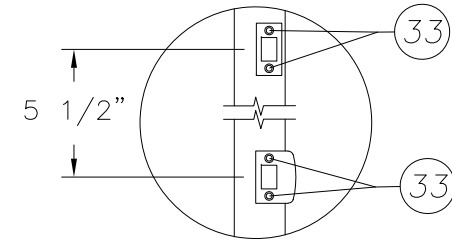
**DETAIL A - HINGE MOUNTING DETAIL**  
SCALE: 3" = 1'-0"



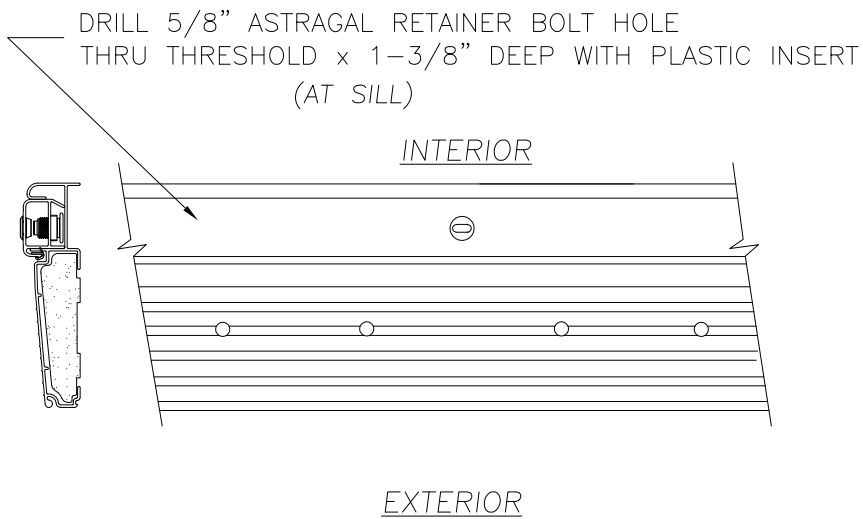
**DETAIL B - THROWBOLT STRIKE PLATE MOUNTING**  
SCALE: 3" = 1'-0"



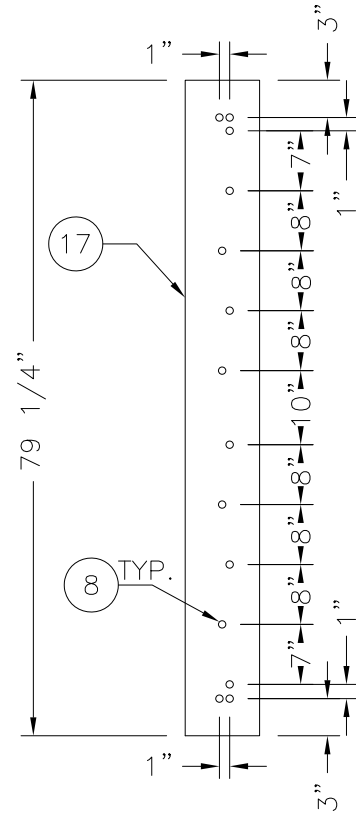
**DETAIL C - STRIKE PLATES TO JAMBS**  
SCALE: 3/8" = 1'-0"



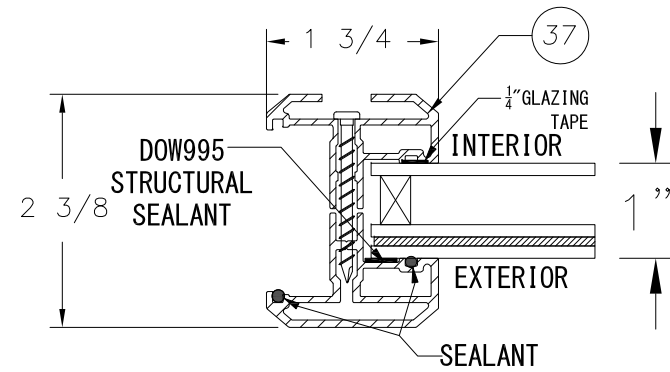
**DETAIL D - STRIKE PLATES TO ASTRAGAL**  
SCALE: 3/8" = 1'-0"



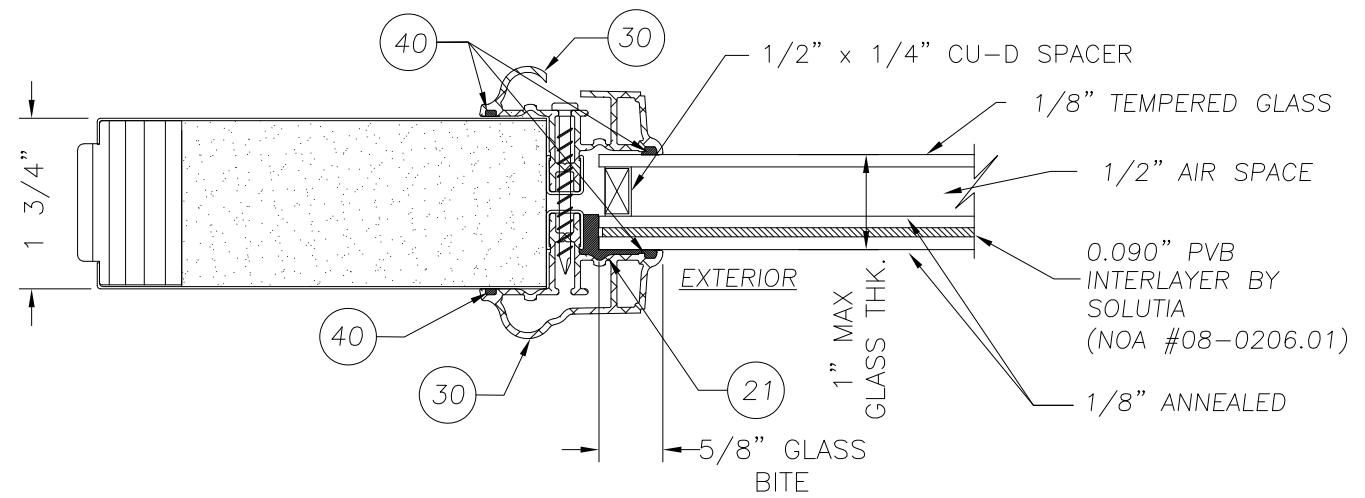
**DETAIL E - TYPICAL ASTRAGAL RETAINER BOLT HOLE**  
SCALE: 3" = 1'-0"



**DETAIL F - ASTRAGAL FASTENER SPACING USE #8x1\"/>**



**ODL IMPACT OPTION GLAZING DETAIL**



**DETAIL G - ODL GLAZING DETAIL ISULATED GLASS**  
SCALE: 6" = 1'-0"

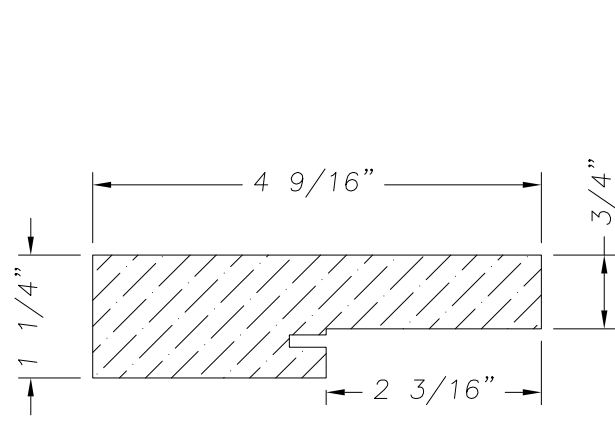
**JELDOWEN**  
WINDOWS & DOORS  
3737 Lakeport Blvd.  
Klamath Falls, Oregon 97601  
Ph. (541) 882-3451  
Fax (541) 850-2609

PRODUCT: CONTOURS STEEL DOOR, WOOD EDGE  
6-8 INSWING IMPACT GLAZED  
SINGLE OR DOUBLE DOOR UNIT  
PART OR ASSEMBLY: COMPONENT DETAILS

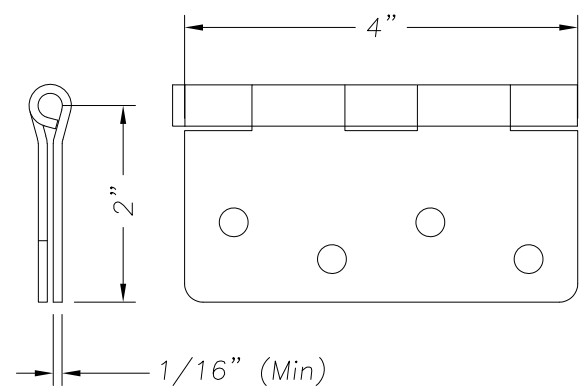
NO.	DATE	BY	REVISIONS
G 01/21/20			ADD ADA THRESHOLD
F 8/28/17			CHG CORE DEFIN.
E 1/20/15			5TH EDITION FBC
D 11/17/10			GENERAL REVISION
C 2/5/08			ADD CONC. DWG.
B 4/8/06			GENERAL REVISION

DATE: 2/5/08  
SCALE: AS NOTED  
DWG. BY: EAG  
CHK. BY: S. SAFFELL  
DRAWING NO.: JW0509-04  
SHEET 6 OF 7

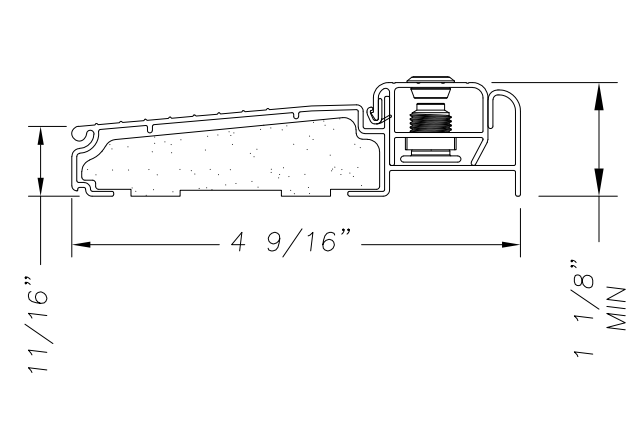




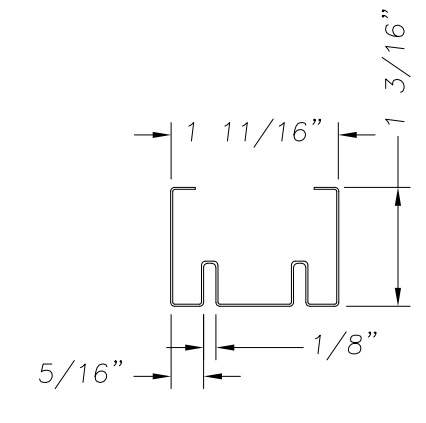
1 WOOD JAMB FINGERJOINTED PINE  
SCALE: 6" = 1'-0"



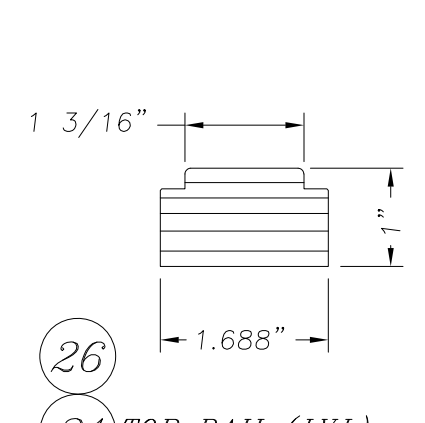
3 BUTT HINGE 4x4x12 GA.  
SCALE: 6" = 1'-0"



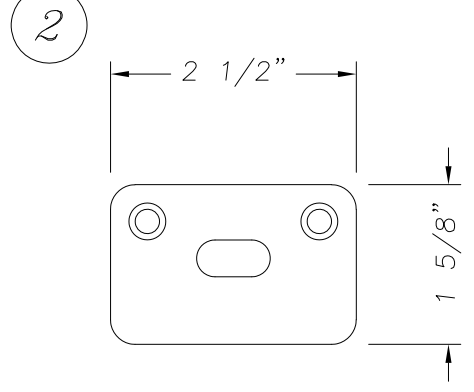
11 INSWING THRESHOLD  
SCALE: 6" = 1'-0"



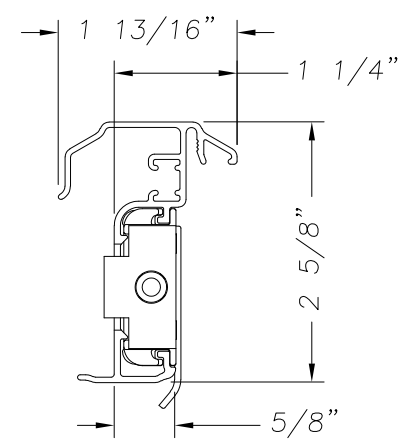
27 BOTTOM RAIL  
STEEL, 25GA MIN. GALV.  
SCALE: 6" = 1'-0"



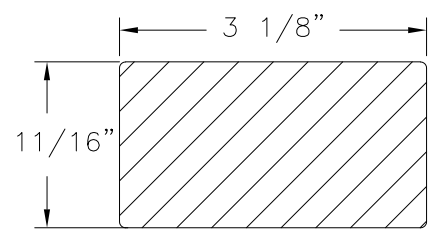
26  
31 TOP RAIL (LVL)  
HINGE STILE (LVL)  
32 LATCH STILE (LVL)  
SCALE: 6" = 1'-0"



13 ASTRAGAL STRIKE PLATE  
SCALE: 6" = 1'-0"

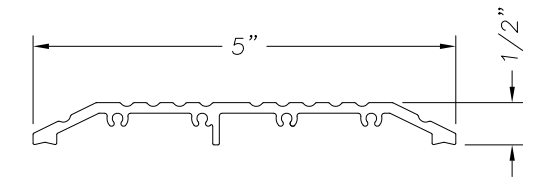
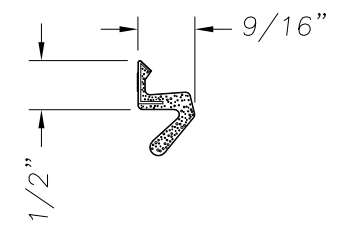


17 ALUMINUM ASTRAGAL  
SCALE: 6" = 1'-0"

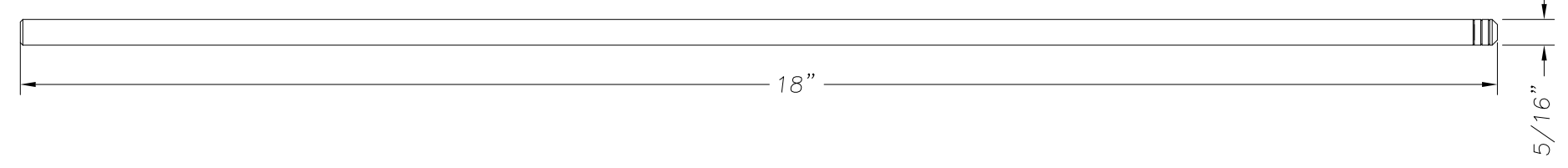


25 LOCK BLOCK WOOD  
SCALE: 6" = 1'-0"

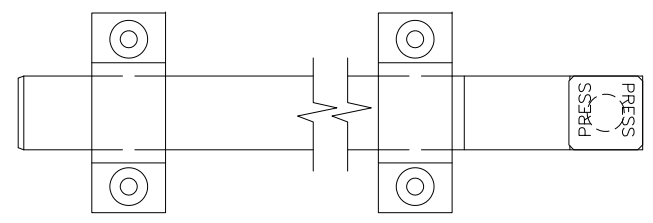
9 COMPRESSION WEATHERSTRIP  
QDS-650 SCALE: 6" = 1'-0"



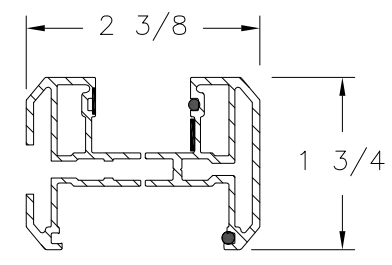
39 OPERABLE ADA SILL  
ALUMINUM



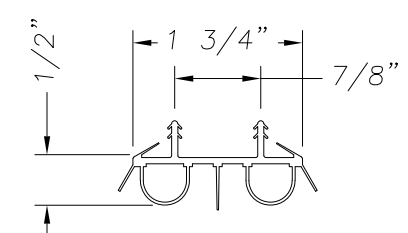
12 ASTRAGAL BOLT  
MAT.- C/R STEEL ROD  
ZINC & YELLOW CHROMATE  
SCALE: 6" = 1'-0"



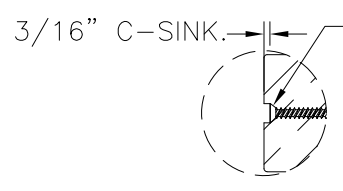
38 FLUSH BOLT  
SCALE: 6" = 1'-0"



37 FLAT LITE KIT  
20 1/2" MAX. D.L.O. WIDTH  
62 5/8" MAX D.L.O. HEIGHT



34 DOOR BOTTOM SWEEP  
SCALE: 6" = 1'-0"



NOTE  
1-USE #10 WOOD INSTALLATION SCREW W/ 1 1/2" MIN. EMBEDMENT  
WHEN INSTALLING INTO WOOD SUBSTRATE AT HEAD & JAMBS.  
2-USE #8 x 2 1/2" PFH WOOD SCREW WHEN INSTALLING INTO MULLIONS.  
3-USE 3/16" ITW TAPCON ANCHOR W/ 1 1/4" MIN. EMBED.  
WHEN INSTALLING INTO CONCRETE/MASONRY SUBSTRATE AT SIDELITE SILLS.

DETAIL A - COUNTERSINK DETAIL  
SCALE: 1/4" = 1'-0"



PRODUCT:  
CONTOURS STEEL DOOR, WOOD EDGE  
6-8 INSWING IMPACT GLAZED  
SINGLE OR DOUBLE DOOR UNIT  
PART OR ASSEMBLY:  
UNIT COMPONENTS

NO.	DATE	BY	REVISIONS
G 01/21/20		TB	ADD ADA THRHOLD
F 8/28/17		JH	CHG CORE DEFIN.
E 1/20/15		SM	5TH EDITION FBC
D 11/17/10		GL	GENERAL REVISION
C 2/5/08		EAG	ADD CONC. DWG.
B 4/8/06		DREW	GENERAL REVISION

DATE: 2/5/08  
SCALE: AS NOTED  
DWG. BY: EAG  
CHK. BY: S. SAFFELL  
DRAWING NO.: JW0509-04  
SHEET 7 OF 7

**JELDOWEN**  
WINDOWS & DOORS  
3737 Lakeport Blvd.  
Klamath Falls, Oregon 97601  
Ph. (541) 882-3451  
Fax (541) 850-2609